



**To Create the Best Business Environment in China
To Support the High-Quality Development of New
Material Enterprises**



CONTENTS

01 Overview of Pinghu City

02 Overview of Zhejiang-Shanghai
New Material Park

03 Advantages of Investment
Environment

An aerial night view of Pinghu City, China, featuring a large lake with a vibrant pink and purple fountain display. The city skyline is illuminated with lights, and a multi-lane highway with traffic is visible in the foreground. A large green diagonal overlay covers the left and bottom portions of the image.

01

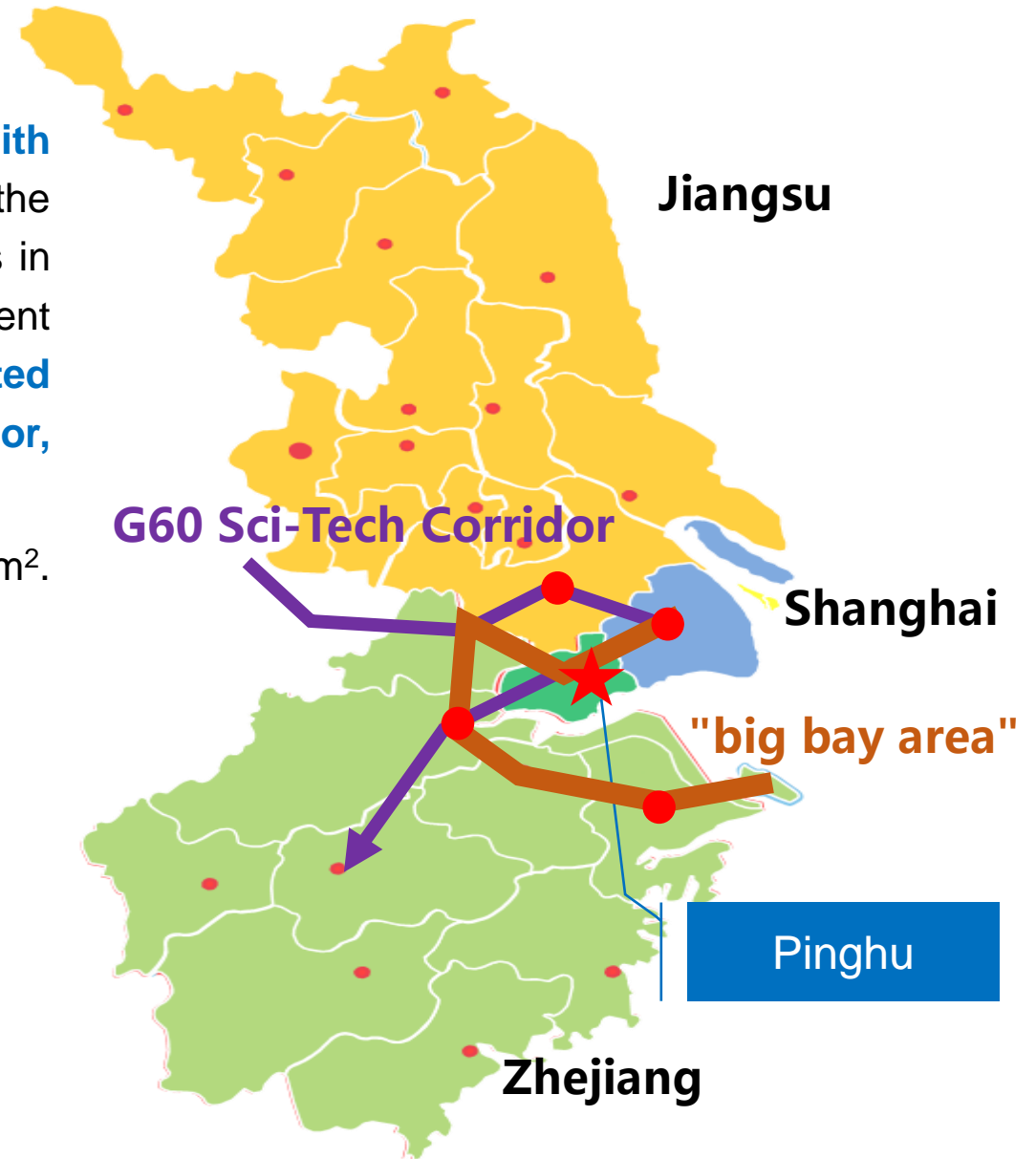
Overview of Pinghu City



Location

Pinghu is located in the northeast of Zhejiang Province, **with Shanghai to the north and Hangzhou Bay to the south**. Being the intersection of Shanghai, Suzhou, Hangzhou and Ningbo, Pinghu is in the core area for many national and provincial key development strategies like **The Belt and Road Initiative, the integrated development of Yangtze River Delta, the G60 Sci-Tech Corridor, the Zhejiang "big bay area"** and so on.

The city has a land area of **553** km², and a sea area of **1070** km². It also has a coastline of **27** kilometers.





Comprehensive Strength

Financial Figures of 2018	
Area	Land: 553 km ² Sea: 1070 km ²
Population	695,900
GDP	69.39 Billion RMB
Financial Revenue	13.57 Billion RMB
General Public Budget Revenue	8.19 Billion RMB
Gross Value of Industrial Output (above scale enterprises)	187.8 Billion RMB
Per Capita Disposable Income	Urban: 58,000 RMB Rural: 34,000 RMB

- ◆ Ranking **47th** among the top 100 counties (cities) all over the country in terms of its comprehensive strength
- ◆ The **Pioneer** of the integration and deep fusion of the Yangtze River Delta
- ◆ China's **first group** of Coastal Cities that **opened to other countries**
- ◆ One of **the most popular** cities in China among **Japanese and German** enterprises
- ◆ Awarded **“Safe City”** of Zhejiang Province for 14 years in a row
- ◆ Ranking 17th in China in terms of the comprehensive **well-off index**
- ◆ National Science and Technology City
- ◆ National Health City
- ◆ National Ecological Demonstration Zone and National Garden City

An aerial night view of a city, likely Hangzhou, China, featuring a large, illuminated fountain with multiple jets of water in the foreground. The city skyline is visible in the background, with numerous high-rise buildings and streets lit up. A large green diagonal graphic element is overlaid on the left side of the image.

2

Overview of Zhejiang-Shanghai New Material Park



Zhejiang Dushan Port Economic Development Zone

Growth pole of Pinghu's economy

Planning area: **111.9** km²

Coastline: **15.6** km

3 Industrial Sectors

Chemical & new material

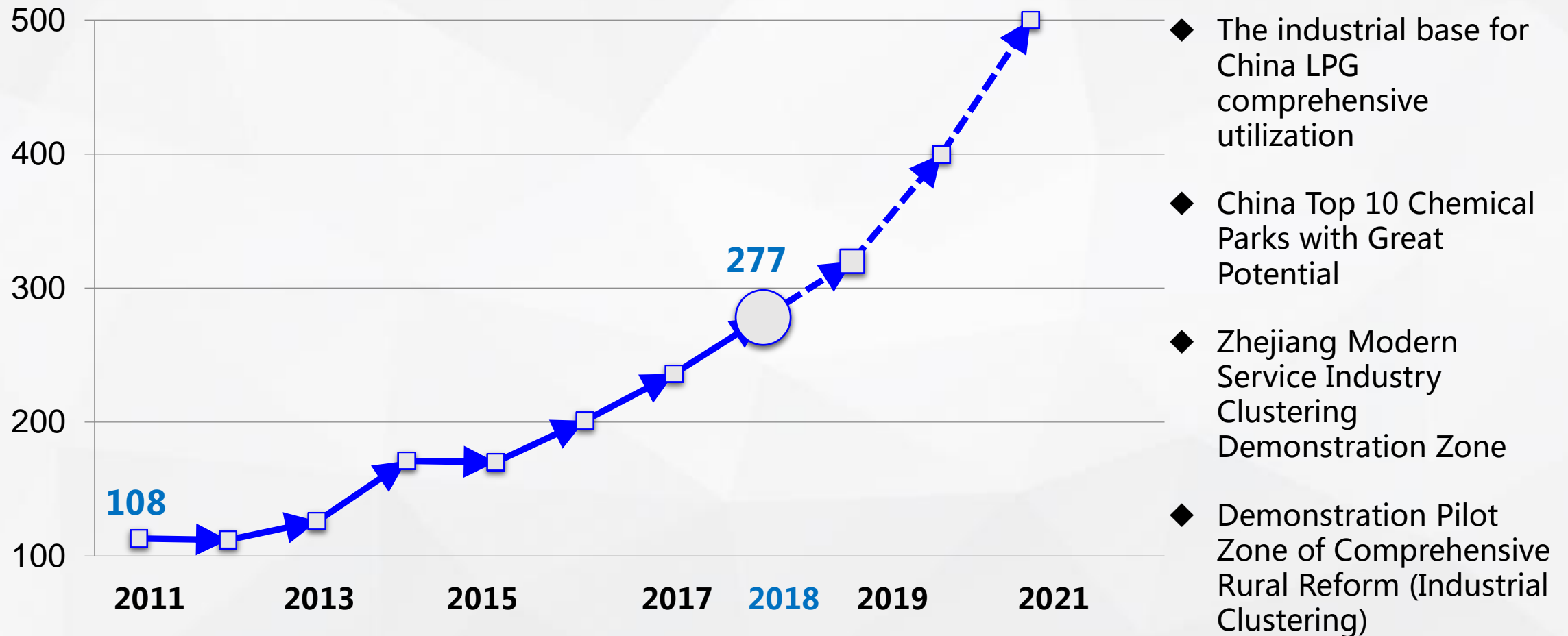
High-end equipment manufacturing

Modern port logistics



Economic indicators

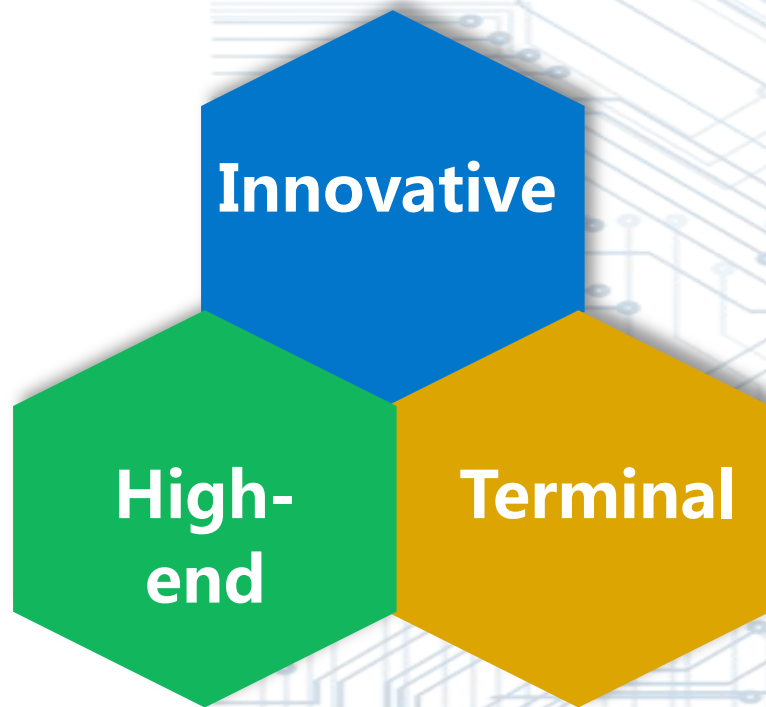
The industrial output value of Dushan reached **27.7** billion yuan in 2018.
It is estimated to reach above billion **500** yuan by 2021.





Industrial Orientation

Aviation, New Energy Vehicle Electronic Information and Health



- Electronic chemicals
- High-end surfactants
- Adhesive and catalyst
- high-performance resins
and coatings
- Polymer material

Development Orientation

◆ Green Development :

Eco-friendly, energy conservation, emission reduction, maximization of resources utilization and integration of public services

◆ Intelligent Development :

Enterprises: automation and intelligence application
Park: integrated management of five aspects

safety supervision

emergency security

hazard supervision

medical services

logistics management



Park Facilities

01

Road: well-constructed road network, 10 mins to provincial and national highways and expressway, 15 mins to Shanghai Metro station, 30 minutes to high-speed railway station.

02

Land: “seven connections and one leveling” (road, electricity, water supply, rainwater, sewage, communications, natural gas, land leveling).

03

Power supply: supplied by East China Power Grid with 10KV - 110KV double circuit power.

04

Water supply: current capacity 50,000 tons per day, and the long-term planning capacity 250,000.

05

Rainwater: treated separately with sewage; pipeline connected to the red line boundaries of the plot.



Park Facilities



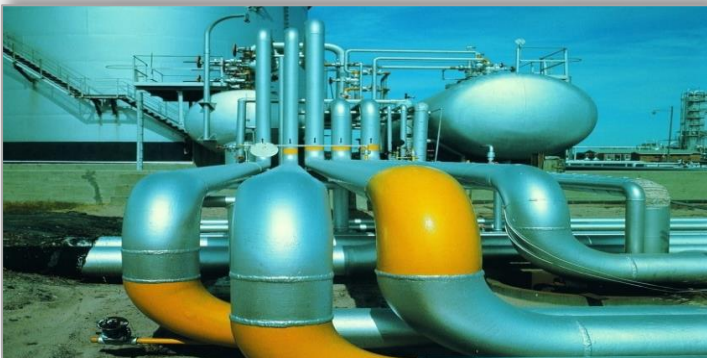
06

Natural gas: well-constructed pipeline network, directly connected from the West-East Gas Pipeline; 1 Mpa-9 Mpa of pressure; lowest price in Zhejiang Province.



07

Steam: supplied by Pinghu Binhai Thermal Power with double gas sources and pressure of 1Mpa-9Mpa.



08

Sewage: current treating capacity 40,000 tons per day, and the long-term capacity 220,000 tons per day.

09

Hazardous Waste Treatment: Jiaxing Solid Waste Disposal Company and Jiaxing Innovative Environmental Technology Company.

Park Facilities

10

Chemical pipe rack: runned by Dushan Port Public Pipe Rack Company; connecting Sinopec Shanghai with enterprises in the park.



11

Liquid chemical terminals and facilities for storage and transportation:

Available to build 12 liquid chemical terminals of 50,000 tons, 3 have been built and 2 will be next year; 400,000 m³ of liquefied chemical tank has been built.



13

Fire control: Dushan Port Fire Brigade and Sinopec Baishawan Oil Storage and Transportation Company Fire Brigade.



Industrial Clustering

Projects in chemical & new material industry	35
In production/pilot stage	11
In construction	9
In approval process	15

Total investment **27** billion RMB

Estimated annual output **68** billion RMB





Key Project

Output value : about 12.5 Billion RMB

Raw material: Propane

Propylene 900,000 t/a

Acroleic acid 720,000 t/a

Acrylate 720,000 t/a

Hydrogen peroxide 220,000 t/a

PP 450,000 t/a

Hydrogen 42,000 t/a



Satellite Petrochemical Integrated Base

Key Project



Xin Feng Ming Group

**Total investment:
about 13 billion RMB**

Output value: 35 Billion RMB

PTA 4,400,000 t/a

Polyester fiber 2,100,000 t/a



Company Representative



卫星集团
SATELLITE GROUP



An aerial night view of a modern city. In the foreground, a large, multi-tiered fountain with pink and purple lights is illuminated. The city skyline is visible in the background, featuring several tall skyscrapers with glowing windows. A road with traffic is visible in the lower left corner. The entire scene is overlaid on a green diagonal banner.

03

Advantages of Investment Environment



Convenient Transportation – by Air



■ 45 minutes to Shanghai Hongqiao Airport



■ 60 minutes to Shanghai Pudong Airport

■ 90 minutes to Hangzhou Xiaoshan Airport

Convenient Transportation – by Land

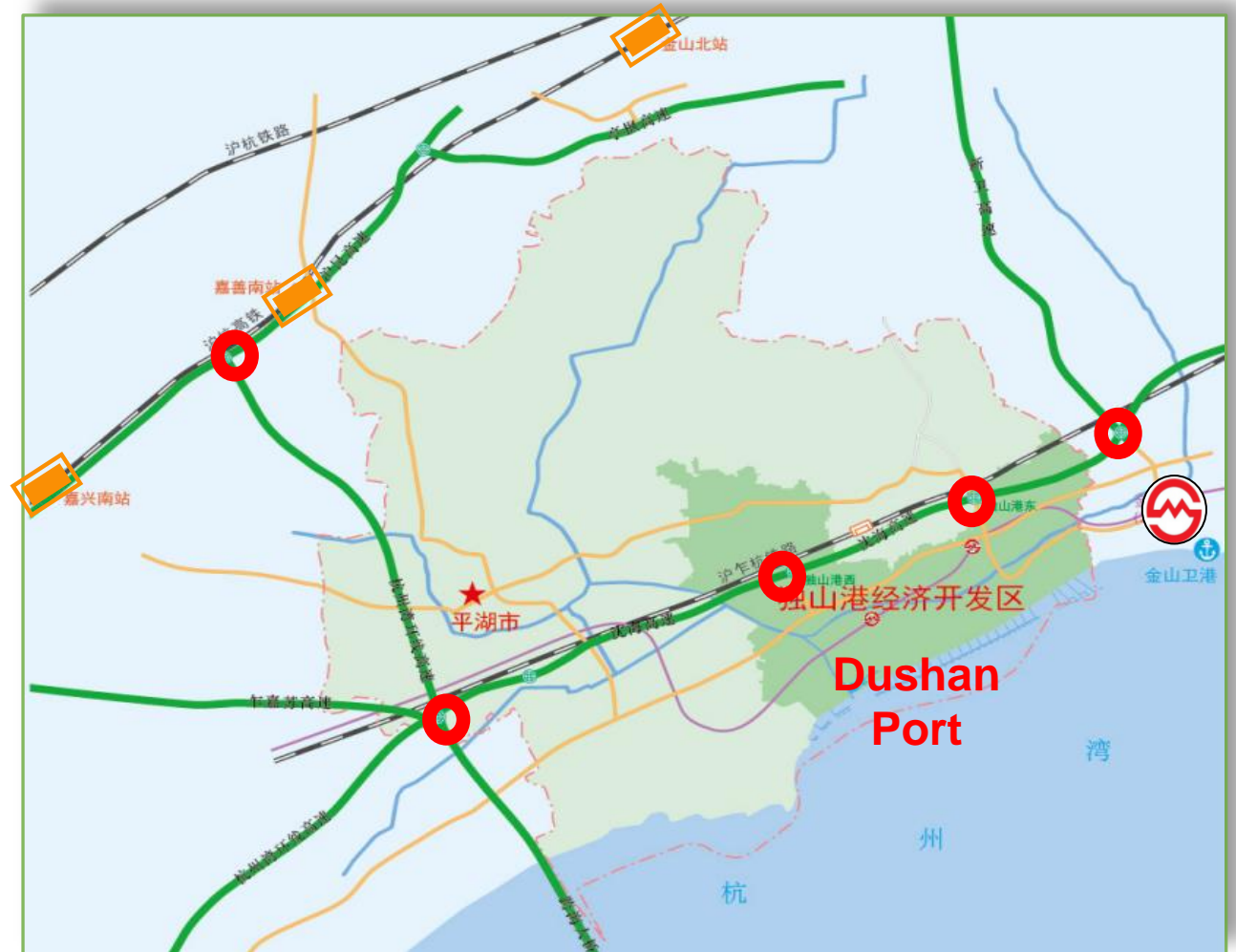


Expressway

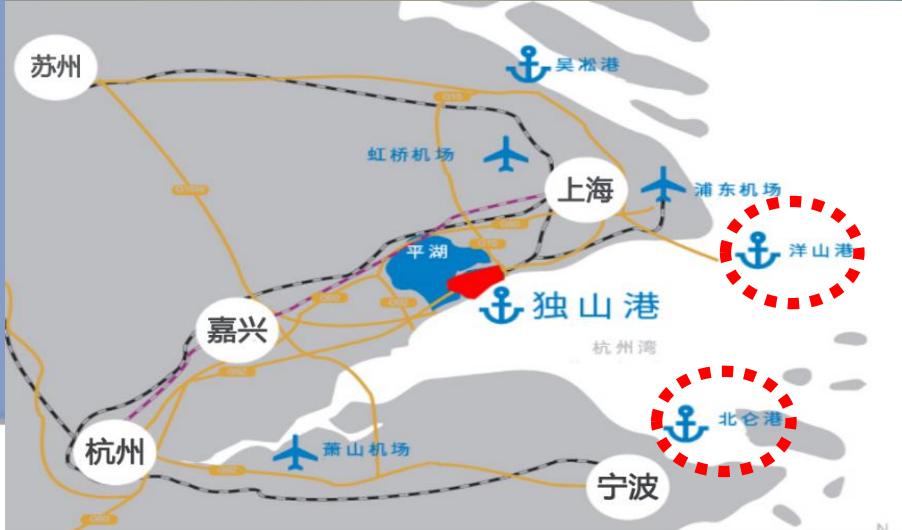


Railway

- Two G15 (Hangzhou–Pudong) Expressway entrances in Dushan;
- 15 minutes to Jinshanwei station of Shanghai Metro Line 22;
- 30 minutes to Jiaxing South, Jiashan South, Jinshan North stations
- Metro Line 22 to be extended to Pinghu with two stops in Dushan



Convenient Transportation – by Sea



National First-class Opening Port

- 40 sea miles from Yangshan Port
- 70 sea miles from Ningbo Port
- Available to build **43** terminals of **30,000 tons to 50,000 tons**
- **Important part of Shanghai and Ningbo International Shipping Centers**
- **Key logistics center on the north shore of Hangzhou Bay**



Compliance and Stability

Establishment of Dushan Port Provincial EDZ with the approval of Zhejiang Government

2014年

Regulatory plan of Dushan Port EDZ completed

2017年

Chemical and new material industry in the park listed in the petrochemical development plan of Zhejiang Province and Jiaxing City

2016年

The EIA of park planning approved by Zhejiang Environmental Protection Department

2018年





Superior Business Environment

**Abundant
human resources**



**Efficient
government services**



**Pleasant
living environment**

Abundant Human Resources



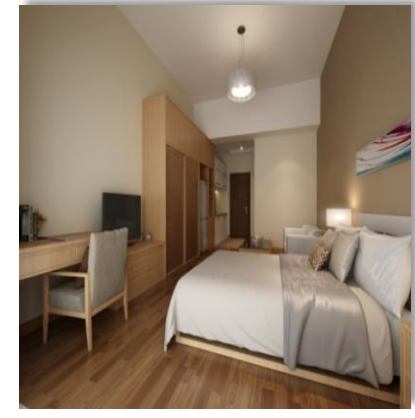
**Jiaying
University**



**Pinghu
Technical
School and
several other
vocational
schools**



**Introduced
Dual System
and
apprentice
system from
Germany**



**Staff
apartment
with complete
facilities and
comfortable
environment**

Industries developed and talents clustering

Abundant Human Resources



Local human resources market actively meets the needs of enterprises



Human Resources Service Industry Park provides "one-stop" service for enterprises and talents



88 colleges and universities within 100 kilometers



Stable cooperation with more than 40 colleges and universities in Shanghai, Hangzhou, Xi'an, Wuhan...

Industries developed and talents clustering

Efficient Government Services

1

Service Concept:
be a server for enterprises

2

Approval Reform:
one stop service, online service

3

Enterprise Service:
one-stop, nanny-style full services

0 external cost

0 disturbance in operation

0 complaints

0 distance in service



Service Center





Pleasant Living Environment



Jiaxing University



Cooperation with
Shanghai Hualong
Hospital



Cardiff International School



Education



Medical



Maple Leaf International School



Pinghu First People's Hospital



Pleasant Living Environment

Culture



Watermelon Lantern



Mo's Mansion



Bo Zi Shu



Li Shutong Museum

Tourism



Jiulong Mountain Resort



East Lake

Living



**Welcome to
Pinghu !**

Thanks !

